



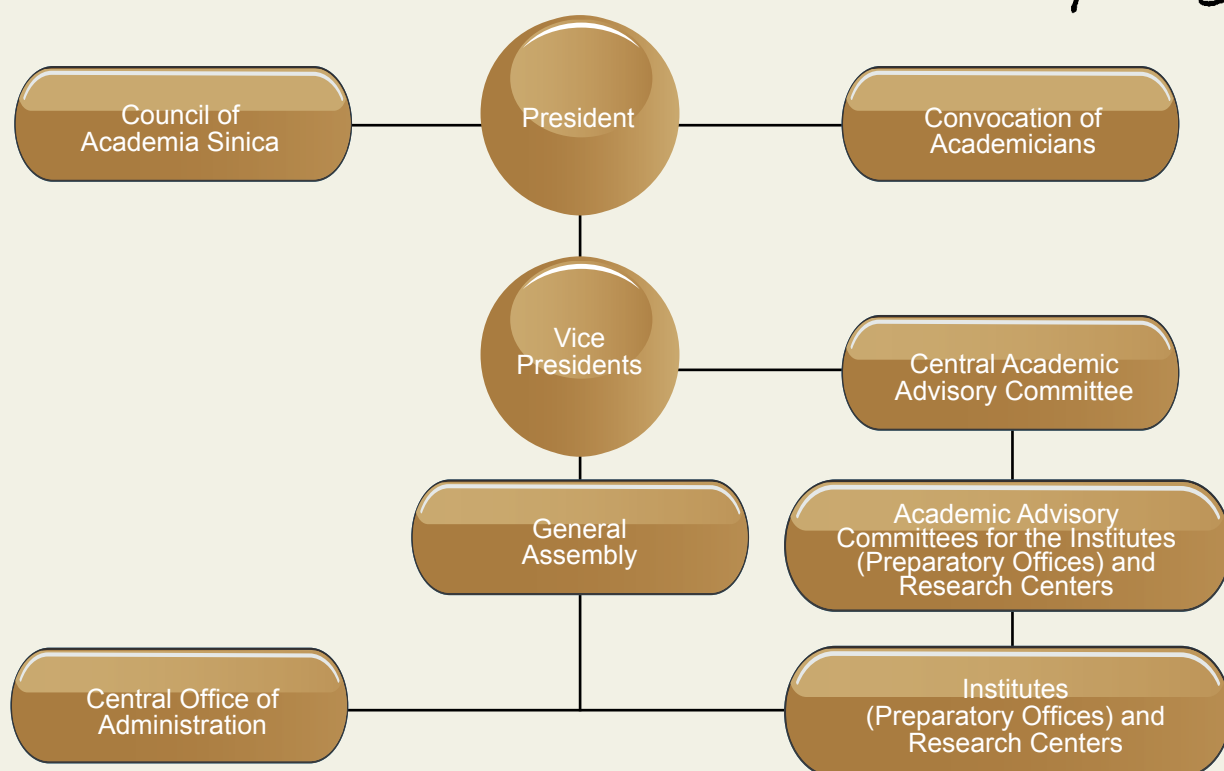
Pursuing Excellence

Founded in 1928, Academia Sinica is the foremost academic research institution in the Republic of China. Academia Sinica has the mission to conduct cutting-edge research in the humanities and sciences, encourage outstanding academic research and nurture advanced research talent in all fields of study. The current President of Academia Sinica is Academician Chi-Huey Wong, who assumed office in October 2006. President Wong is assisted in guiding academic and administrative affairs by three vice presidents, namely Academician Shie-Ming Peng, Academician Chien-Jen Chen and Academician Fan-Sen Wang.

Academia Sinica is dedicated to placing equal emphasis on the development of the humanities and sciences, and on basic scientific research as well as applied research. Academia Sinica encompasses 24 research institutes and 7 research centers which are organized into three divisions: Mathematics and Physical Sciences, Life Sciences and Humanities and Social Sciences. Over 1,800 research staff holding Ph.D. degrees are employed at Academia Sinica, and among the 252 Academicians, 8 are Nobel Laureates. The Central Office of Administration is responsible for the administrative work of Academia Sinica, while the Central Academic Advisory Committee promotes academic development. Academia Sinica has an overall annual budget of approximately 11 billion New Taiwan Dollars.

Looking to the future, Academia Sinica will continue its pioneering efforts across a broad range of disciplines. Endowed with a tradition of academic excellence and outstanding research foundations, Academia Sinica will forge ahead to make path-breaking research discoveries and offer innovation applications of newly acquired knowledge. Academia Sinica is firmly committed to benefiting society and making lasting contributions to global developments, enriching human civilization and creating a better future for humanity.

Chi-Huey Wong



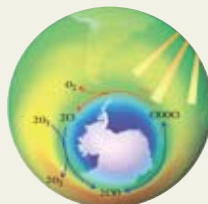


Institute of Mathematics

The Institute of Mathematics pursues research in the following areas:

- (1) Applied mathematics and analysis
- (2) Geometry and mathematical physics
- (3) Combinatorial mathematics and applications
- (4) Probability theory and applications
- (5) Number theory and algebra

<http://www.math.sinica.edu.tw>



Institute of Atomic and Molecular Sciences

The IAMS conducts research on physical chemistry of atoms/molecules and applies this knowledge to material, energy and bio-technologies.

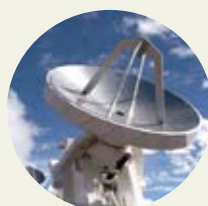
<http://www.iams.sinica.edu.tw>



Institute of Physics

The Institute of Physics currently has 46 principle investigators. The research activities cover three major areas: Nanoscience, Complex Systems and Medium and High Energy Physics. Within these areas, the main research topics include particle physics and cosmology, statistical and computational physics, high energy experimental physics, nuclear physics, condensed matter and surface science, biophysics, fluid mechanics and nonlinear physics.

<http://www.phys.sinica.edu.tw>



Institute of Astronomy and Astrophysics

Research topics carried out at the ASIAA range from solar system studies to cosmology, with our staff making use of many of the frontier observing facilities. We have established a number of important world-class facilities (SMA, AMiBA, TAOS) and are currently participating in ALMA, TAOS-2 and Submm VLBI project. The ASIAA also pursues a vigorous research program in theory and is actively engaged in astronomy education and outreach activities.

<http://www.asiaa.sinica.edu.tw>



Institute of Chemistry

Institute of Chemistry currently has 28 principle investigators conducting multidisciplinary research programs mainly in materials chemistry and nanoscience, chemical biology, medicinal chemistry and catalytic chemistry.

<http://www.chem.sinica.edu.tw>



Research Center for Applied Sciences

Major research areas at the RCAS are optoelectronics, nanotechnology, mechanics and theoretical simulation.

<http://www.rcas.sinica.edu.tw>



Institute of Earth Sciences

Theoretical and applied geophysics and geochemistry. These disciplines are applied to the study of the internal constitution, structure, dynamics, and evolution of the Earth, as well as the understanding of natural hazards.

<http://www.earth.sinica.edu.tw>



Research Center for Environmental Changes

The RCEE conducts research on atmospheric chemistry, air quality, biogeochemical cycles of fresh water systems in Taiwan and surrounding oceans, water resources and regional climate changes.

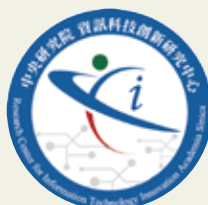
<http://www.rcec.sinica.edu.tw>



Institute of Information Science

Established in 1982, the mission of the Institute of Information Science is to conduct fundamental but high-quality research in various areas of information science and to develop advanced application-driven systems that utilize and enhance cutting-edge technologies. Our research area focus on eight main categories that include bioinformatics, computer system, information processing and discovery, multimedia technologies, natural language and knowledge processing, network systems and service, programming languages and formal methods, and theory and algorithm.

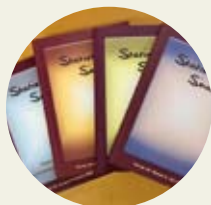
<http://www.iis.sinica.edu.tw>



Research Center for Information Technology Innovation

The Research Center for Information Technology Innovation (CITI) was founded in February 2007, to integrate the research and development activities in information technologies among various organizations in Academia Sinica, and also to further promote IT-related multi-disciplinary research.

<http://www.citi.sinica.edu.tw>



Institute of Statistical Science

The Institute of Statistical Science conducts fundamental research related to statistics and probability, as well as social networks and their applications.

<http://www.stat.sinica.edu.tw>



Institute of Plant and Microbial Biology

The research in the Institute of Plant and Microbial Biology is organized into two major intellectual foci:

1. Mechanisms of Plant Functioning;
2. Plant-Microbial Interactions.

The former research area can be divided into the emphases Arabidopsis Genetics and Development, Biochemistry and Cell Biology, Bioresources, and Cereal Genomics.

[http:// ipmb.sinica.edu.tw](http://ipmb.sinica.edu.tw)



Institute of Molecular Biology

The research areas of the IMB include: (1) Nuclei acids and chromosome biology; (2) Developmental biology and neurobiology; (3) Structural biology; (4) Plant molecular biology; (5) Interaction between virus and its host; (6) Biochemistry and cellular physiology.

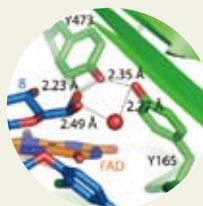
<http://www.imb.sinica.edu.tw>



Institute of Cellular and Organismic Biology

Current research efforts of the ICOB can be divided into four areas: (1) aquabiology and marine biotechnology, (2) cellular and organismic functional analysis through studies with model animal systems, (3) molecular basis of cellular function and dysfunction, and (4) cellular structural analysis.

<http://icob.sinica.edu.tw>



Genomics Research Center

To attain a better understanding of genes associated with diseases and their functions, the Genomics Research Center focuses on the discovery and validation of disease targets and development of innovative technologies and therapeutic strategies. The Center focuses its research on chemical biology, medical biology, and physical and computational genomics. It endeavors to develop cutting-edge diagnosis tools and innovative therapeutic strategies through interdisciplinary programs, and the extension of basic discoveries to translational research. It also strives to promote technology transfer to translate important discoveries into commercial opportunities, with the goal of improving infrastructure and technology to create a prosperous biopharmaceutical industry in Taiwan.

<http://www.genomics.sinica.edu.tw>



Institute of Biological Chemistry

The Institute of Biological Chemistry has focused on two major themes of research: (1) Biochemical basis of posttranslational regulation and cell signaling network, (2) Structural and mechanistic basis of protein function and drug design. Throughout these studies, we aim to pursue quality and excellence in research with a deep commitment to promote collaboration among fellow scientists.

<http://www.ibc.sinica.edu.tw>



Biodiversity Research Center

The four foci of research in the Biodiversity Research Center are: (1) Marine Biodiversity and Ecosystems; (2) Terrestrial Biodiversity and Ecosystems; (3) Evolutionary Genetics and Genomics; (4) Microbial Diversity and Bioinformatics.

<http://biodiv.sinica.edu.tw>



Institute of Biomedical Sciences

The mission of the IBMS is to identify disease genes and elucidate disease-causing mechanisms in order to develop new diagnostic and therapeutic strategies to improve human health. In other words, translational medicine is our ultimate goal.

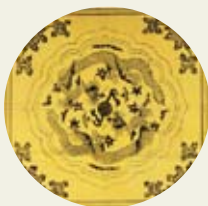
<http://www.ibms.sinica.edu.tw>



Agricultural Biotechnology Research Center

The ABRC pursues innovative research in areas including integrative plant stress biology, herbal medicine, molecular vaccines, and enzyme biotechnology.

<http://abrc.sinica.edu.tw>



Institute of History and Philology

The Institute of History and Philology (IHP), inaugurated in 1928, was Academia Sinica's first institute. The IHP is one of the most accomplished research institutions in the international community of Chinese studies. It consists of an acclaimed faculty, a library of exceptional distinction holding various rare and recent collections of documents related to Chinese history, digital collections of Chinese historical texts and images, as well as an outstanding museum of Chinese history. The institute conducts research in history, archeology, anthropology and philology.

<http://www.ihp.sinica.edu.tw>



Institute of Ethnology

Research at the IOE can be divided into four thematic areas: (1) Cultural History & Ethnicity (2) The Interface between Culture and Psychology: (3) Contemporary Context of Socio-cultural Development (4) Cultural Performances and Narration:

<http://www.ioe.sinica.edu.tw>



Institute of Modern History

Research conducted at the Institute of Modern History encompasses the transformations in modern Chinese politics, military affairs, foreign policy, society, economics, culture, and thought, with particular focus on exploration of the formation of modernity. The Institute seeks to preserve its scholarly traditions while being receptive to contemporary social and human needs.

<http://www.mh.sinica.edu.tw>



Institute of Economics

The Institute of Economics pursues scientific research in economic theory and applications, with special focus on economic development problems and related policy issues in Taiwan. Our current research projects include:

(1) Macroeconomics, Growth Theory, and Monetary Economics: Theory and Applications; (2) Econometrics Theory; (3) Finance and their Applications; (4) International Economics; (5) Microeconomic Theory and Mathematical Economics; (6) Population, Family, Labor, and Health Economics; (7) Agricultural, Environmental, and Resource Economics; (8) Industrial Organization, and Regional Economics; (9) Public and Legal Economics; and (10) Public Policies. Most of the Institute's research is published in leading international scholarly journals.

<http://www.econ.sinica.edu.tw>



Institute of European and American Studies

The researchers of the Institute of European and American Studies have explored studies of the major areas of Western culture and civilization, including European and American literature and culture, American and German diplomatic history, the philosophy of language and mind, the structure and transformation of societies, history of art and sociology of culture, major legal issues, EU law and politics, political systems and behavior, and American foreign policy and international relations.

<http://www.ea.sinica.edu.tw>



Institute of Sociology

Since its establishment, the Institute has pursued six major objectives: to promote indigenous research and self-identity of Taiwan sociology; to promote research in societies and areas neighboring to Taiwan; to promote international comparative studies; to systematize important sociological subfields; to develop original research agendas; and to strengthen cooperation with other sociological communities.

<http://www.ios.sinica.edu.tw>



Institute of Chinese Literature and Philosophy

The institute is currently devoted to the studies of classical and modern Chinese literature, Chinese and comparative philosophy and Confucian classics.

<http://www.litphil.sinica.edu.tw>



Institute of Taiwan History

The Institute of Taiwan History has set up five research groups devoted to major fields of research spanning the period from 17th to 20th century, aimed at building a world-class institution in Taiwan studies.

<http://www.ith.sinica.edu.tw>



Institute of Linguistics

The overall objective of the Institute of Linguistics is to achieve scientific and systematic knowledge about human language by conducting purely linguistic as well as interdisciplinary research on languages of Taiwan and genetically and geographically related languages. Important contributions have been made especially in linguistic structure analyses, linguistic computation and simulation, language archiving and cross-discipline studies.

<http://www.ling.sinica.edu.tw>



Institutum Iurisprudentiae

The IIAS conducts research on:

(1) Constitutional Structure and Human Rights; (2) Administrative Regulation and Judicial Remedies; (3) Law, Science and Technology; (4) Jurisprudence and Social Transformation; (5) Legal Development in China, Hong Kong, and Macau; (6) Comparative Study of Judiciary Systems, Empirical Study of Judicial Behavior, and Legislative Studies.

<http://www.iias.sinica.edu.tw>



Institute of Political Science

Our main research directions are: Taiwan politics and nascent democracies, Political and economic transitions in Mainland China and post-socialist countries, Cross-Strait relations and international relations theory, Political value change in East Asia and global democratic development and Methodology.

<http://www.ipsas.sinica.edu.tw>



Research Center for Humanities and Social Sciences

The Research Center for Humanities and Social Sciences consists of three clusters of interdisciplinary research. The cluster of specific thematic research includes political thought, institution and behavior studies, history of health, data mining and learning. The cluster of area studies includes maritime history, archaeology, Asia-Pacific area studies, and economic development and trade in East Asia. The cluster of data archiving and analysis includes survey research, GIS, historical demography and the study of the family in Chinese societies.

<http://www.rchss.sinica.edu.tw>

Academia Sinica Libraries
<http://aslib.sinica.edu.tw>

Hu Shih Memorial Hall
<http://www.mh.sinica.edu.tw/koteki/>

Museum of the Institute of History and Philology
<http://www.ihp.sinica.edu.tw/~museum/tw>

Fu Ssu-nien Memorial Room
<http://lib.ihp.sinica.edu.tw/pages/03-rare/MWSP/01/Fu.htm>

Chien Shih-Liang Memorial Hall

Museum of the Institute of Ethnology
<http://www.ioe.sinica.edu.tw/tool/museum>

Wu Ta-You Memorial Hall
<http://www.phys.sinica.edu.tw/~tywufund>

Lingnan Fine Arts Museum
<http://lnfam.sinica.edu.tw>

Biodiversity Research Museum
<http://museum.biodiv.tw>

National Science and Technology Programs

- Development Program of Industrialization for Agricultural Biotechnology
<http://dpiab.sinica.edu.tw>
- National Research Program for Biopharmaceuticals
<http://nrpgm.sinica.edu.tw>
- National Nanotechnology Bridge Program
<http://nano-taiwan.sinica.edu.tw>
- Taiwan e-Learning and Digital Archives Program
<http://teldap.tw>

Research in Sustainability Science

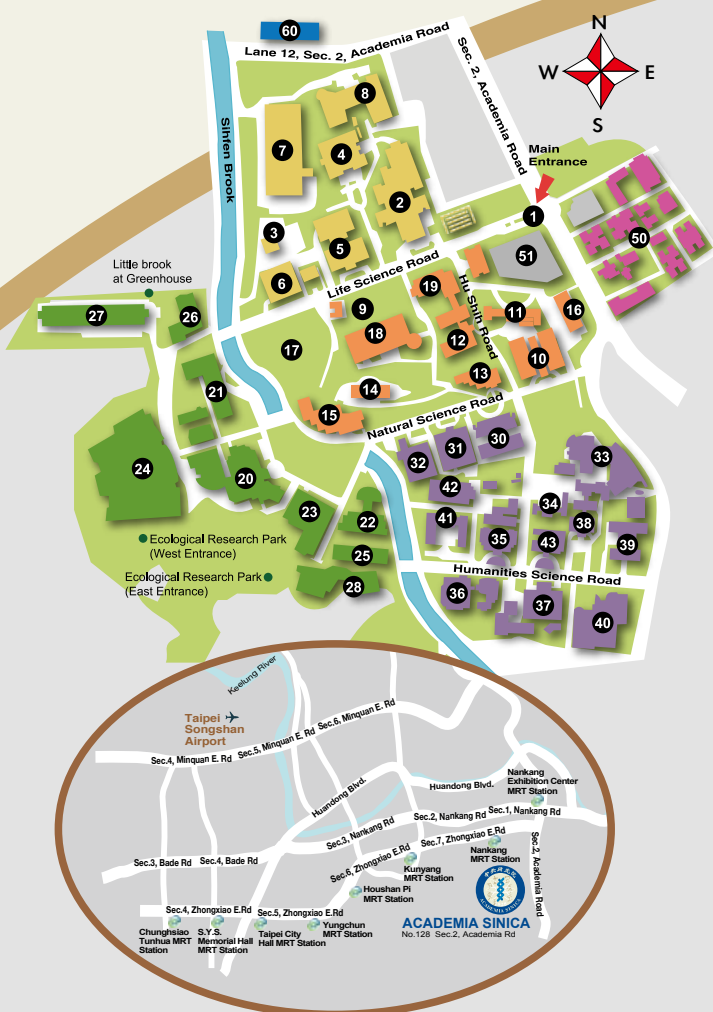
<http://irdr-icoe.sinica.edu.tw>

Graduate Programs at Academia Sinica

<http://tigp.sinica.edu.tw>

<http://asdp.sinica.edu.tw>

Campus of Academia Sinica



- 1 Main Entrance
- 2 Institute of Biomedical Sciences
- 3 Environment, Health and Safety Management Division
- 4 Institute of Cellular and Organismic Biology
- 4 Biodiversity Research Center
- 5 Institute of Molecular Biology
- 6 Institute of Biological Chemistry
- 6 Life Science Library
- 7 National Laboratory Animal Center, NLAC
- 8 Interdisciplinary Research Building for Science and Technology (under construction)
- 9 Mini-forest restoration area
- 10 Central Office of Administration
- 11 Biodiversity Research Center
- 12 Institute of Plant and Microbial Biology
- 13 Research Center for Information Technology Innovation
- 13 IRDR-International Centre of Excellence (IRDR-ICoE)
- 14 Tsai Yuan-Pei Memorial Hall
- 15 Institute of Statistical Science
- 16 Post office, garage, grocery store and Hi-Life convenient store
- 17 Ecopond
- 18 Genomics Research Center
- 19 Agricultural Technology Building
- 19 Agricultural Biotechnology Research Center (Agricultural Technology Building 1st-2nd Floor and 5-7th Floor)
- 19 Institute of Plant and Microbial Biology (Agricultural Technology Building 1st-4th Floor)
- 20 Center of Academic Activities (Bookstore, auditorium, conference rooms, guest rooms, breastfeeding room, Chinese and Western restaurants, coffee shop)
- 21 Institute of Chinese Literature and Philosophy
- 22 Institute of Earth Sciences
- 23 Gymnasium (Breastfeeding room)
- 24 Humanities and Social Sciences Building (HSSB)
- 24 Joint Library of Humanities and Social Sciences (1st-2nd Floor HSSB)
- 24 Institute of Linguistics (5-7th Floor of South Wing, HSSB)
- 24 Institute of Sociology (8-10th Floor of South Wing, HSSB)
- 24 Research Center for Applied Sciences (11th Floor of South Wing, HSSB)
- 24 Research Center for Environmental Changes (11th Floor of South Wing, HSSB)
- 24 Institute of Political Science (5-6th Floor of North Wing, HSSB)
- 24 Institute of Taiwan History (7-8th Floor of North Wing, HSSB)
- 24 Institutum Iurisprudentiae (9-10th Floor of North Wing, HSSB)
- 25 Research Center for Environmental Changes (Laboratories)
- 26 Plant Molecular Breeding Greenhouse
- 27 Greenhouse Building
- 27 Biodiversity Research Center
- 28 Research Center for Environmental Changes (under construction)
- 30 Institute of Chemistry
- 31 Research Center for Humanities and Social Sciences
- 32 Institute of Information Science
- 33 Institute of Physics
- 33 Research Center for Applied Sciences (Laboratories)
- 33 Wu Ta-You Memorial Hall
- 34 Hu Shih Memorial Hall
- 35 Institute of Modern History
- 36 Institute of European and American Studies
- 37 Institute of History and Philology
- 37 Museum of the Institute of History and Philology
- 38 Fu Ssu-nien Library
- 39 Institute of Economics
- 40 Institute of Ethnology
- 40 Museum of the Institute of Ethnology
- 41 Lingnan Fine Arts Museum (Jin Mei Building)
- 42 Archive Building, Institute of Modern History
- 43 Building of Taiwan Archaeological Studies
- 50 Academia Sinica Dormitory Buildings
- 51 Temporary Parking
- 60 TIGP Teaching and Administration Building (TA Building)
- 60 Administrative office for TIGP, Degree Program and Foreigners Services (2nd-3rd Floor of TA Building)
- 60 Kindergarten (1st Floor of TA Building)

* The Institute of Mathematics, Institute of Atomic and Molecular Sciences, Institute of Astronomy and Astrophysics and some buildings belonging to the Institute of Biological Chemistry are located on the National Taiwan University campus.

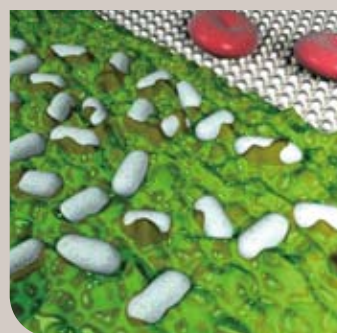
No. 128, Sec. 2, Academia Rd., Nankang, Taipei 11529, Taiwan, R.O.C. Tel: 886-2-2782-2120~9 Fax: 886-2-2785-3847 <http://www.sinica.edu.tw>

- By Bus: Buses 205, 212, 270, 276, 306, 620, 645, 679, Blue 25, minibus 1, minibus 5, and minibus 12 all go to Academia Sinica.
- By MRT: 1. Take the Bannan Line to Nankang Station (Exit 2). Then take bus 212, 270 or Blue 25 to Academia Sinica.
 2. Take the Bannan Line to the Nankang Exhibition Center (Exit 2). Then take bus 205, 212, 276, 306, 620, 645, 679, minibus 1, minibus 5 or minibus 12 to Academia Sinica.
- By Train: Take bus 205, 212, 276, 306, 679, minibus 5 or minibus 12 to Academia Sinica at Nankang Train Station.



ACADEMIA SINICA

2012
ACADEMIA
SINICA



卓越